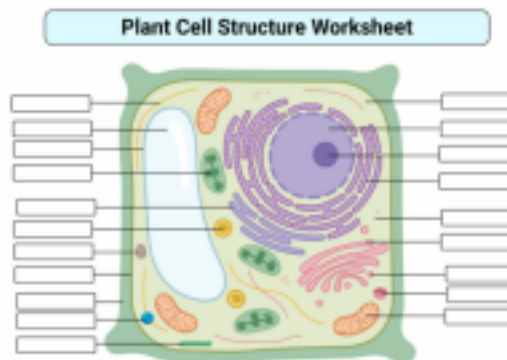


Week-7

Subject: Biology (Grade 8) Name of the faculty: Shahanara Begum

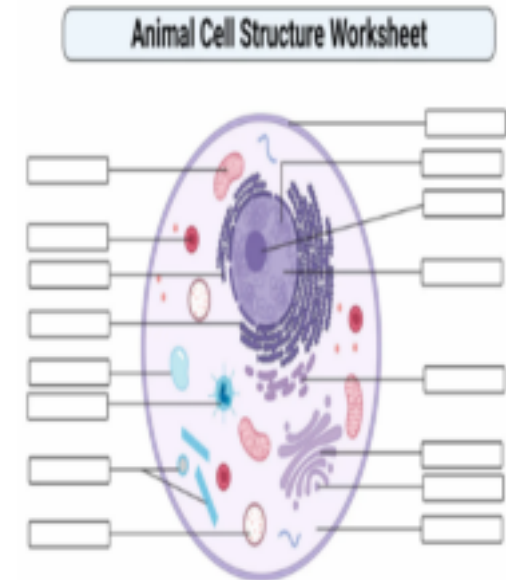
<p>Learning objective & outcome:</p>	
<p>Day: Sunday ,Monday and Wednesday</p> <p>Date: 3/09/2024 to 7/09/2024</p>	<ul style="list-style-type: none"> ● Students will be able to differentiate between plant cells and animal cells. ● Students will be able to describe the features of cells and functions of cell wall,cell membrane and nucleus. ● Students will be able to describe the features of cells and functions of chloroplast,Mitochondria and ribosome.
<p>Chapter & topic/concept Learning engagements:</p>	<p>Tools & Resources</p>
<p>Topic: Cells</p> <p>Chapter: 2</p> <p>Day 1 [Revision]</p> <p>Ice breaking (5 minutes): Prior knowledge about cells.</p> <p>Development activities (30-minutes):Drawing diagrams of plant cells and animal cells.</p> <p>Closing activities (5 minutes): identifying different parts of cells.</p> <p>Day 2 [Revision]</p> <p>Ice breaking (5 minutes): Making puzzles.</p> <p>Development activities (30-</p>	<p>Text Book, Marker, Board, Video Clips.</p> <div style="text-align: center;">  <p>The diagram shows a cross-section of a plant cell with various organelles. A title box above the cell reads 'Plant Cell Structure Worksheet'. The cell contains a large central vacuole, a nucleus, chloroplasts, and other organelles. Lines extend from the cell to a grid of empty boxes on the right, intended for labeling the parts of the cell.</p> </div>

minutes):Discussion on structures

and functions of cell wall,cell membrane and nucleus.
Closing activities (5 minutes):
Quiz on topics.

Day 3

Ice breaking (5 minutes): Making puzzles.
Development activities (30-minutes):Discussion on structures and functions of chloroplast,Mitochondria and ribosome.
Closing activities (5 minutes):
Quiz on topics.



Differentiation: By content/
process/ product/environment

Homework: Making a chart on
plant cells and animal
cells.**Project**

Assessment tools & strategies:

Formative Assessment

Reflection (if any):